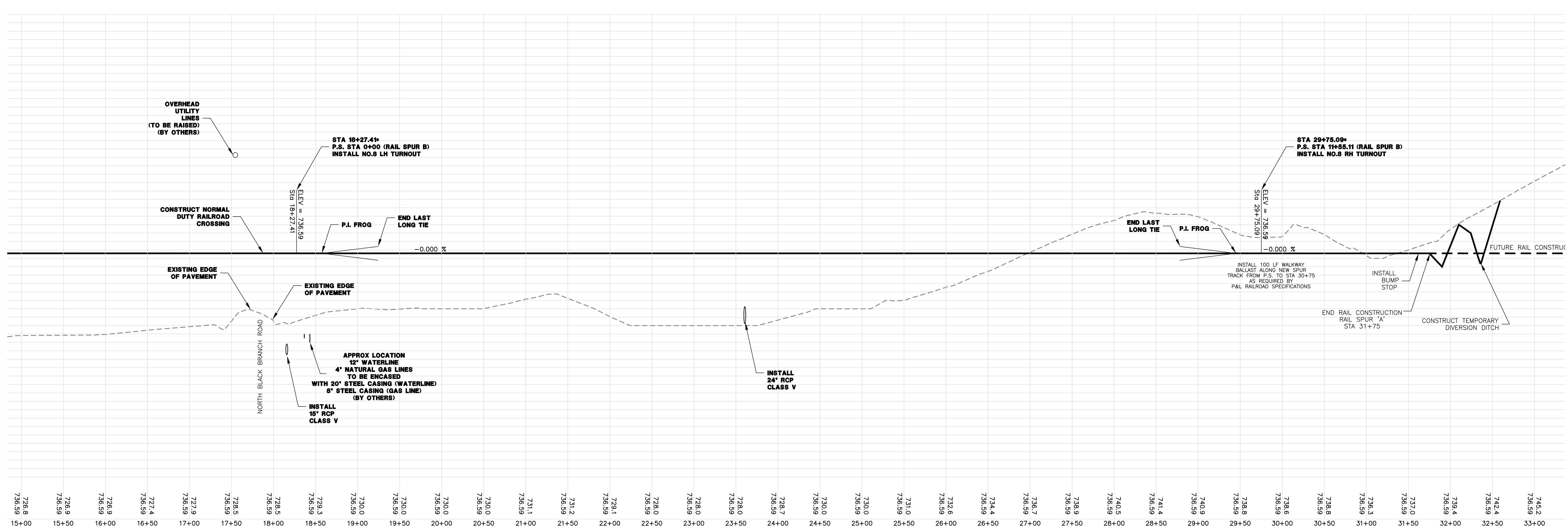
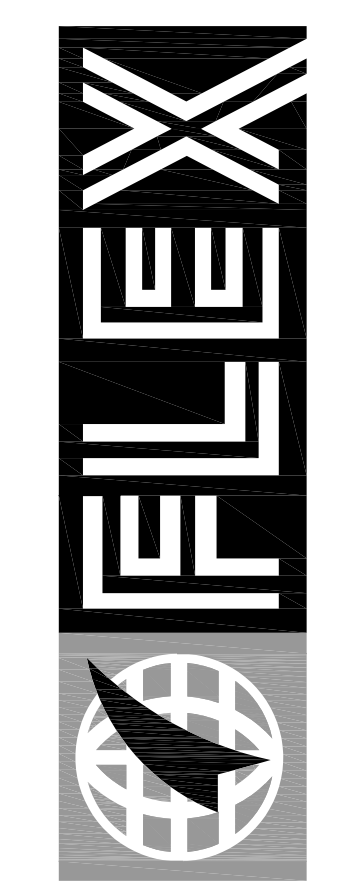


**NOTE:** BUFFER ZONE MAY BE USED AS TOP SOIL STORAGE AREA. EXCESS TOP SOIL CAN BE STORED IN THIS AREA. COORDINATE LOCATIONS AND SIZE OF STORAGE PILES WITH ELIZABETHTOWN INDUSTRIAL FOUNDATIONS. PROTECT PILES BY ENCIRCLING WITH SILT FENCE. TOP SOIL NOT RE-USED FOR THIS PROJECT MAY BE DISPOSED AT THIS LOCATION IF SPREAD SMOOTHLY IN "BERM" TYPE MOUNDS AND SEEDED. DO NOT BLOCK ANY NATURAL DRAINAGE CHANNELS



**RAILROAD SPUR - A PLAN & PROFILE**



**FLEXFILMS, U.S.A., LLC**  
 1221 NORTH BLACK BRANCH ROAD  
 ELIZABETHTOWN, KENTUCKY 42702

PROJECT L-12 BOPET U.S.A.

DATE	BY	REVISION
10-2011	AG	POST BD REVISIONS

PROJECT NO. 2064-25  
 DESIGNED BY G.A.R.  
 DRAWN BY J.R.M.  
 CHECKED BY G.A.R.  
 REVIEWED BY G.A.R.  
 DATE JULY 2011  
 SCALE AS SHOWN

**nsc**  
 OF KENTUCKY, INC.  
 Engineers  
 Architects  
 Planners  
 624 Wallington Way  
 Lexington, KY 40503  
 Phone: (859)223-5684  
 Fax: (859)223-2607  
 www.nscinc.com

**DRAWING NO.**  
**UFL-L12**  
**C-202**

OCT 21 '11 2064-25 FLEX FILM - ELIZABETHTOWN TJ PATTERSON INDUSTRIAL PARK\_C-201\_C-202 RAILROAD SPUR A PLAN AND PROFILE.DWG